

JUKSAN (BD) LTD.

Lace & Schiffli Embroidery Products.



Address: Plot # 5 DEPZ (Ext.) Savar, Dhaka, Bangladesh.

Ph: +880 - 02 - 7788232~4

Fax: +880 -02 - 7788235

Mo: +88 - 01678002478

Email: sales@juksana.com

Website: www.juksana.com



Dr. Syed Ainul Haque
Managing Director

 **JUKSAN (BD) LTD.**
Lace & Schiffli Embroidery Products.



Cho Eun Young
Director

Company's Introduction

Since 1998, Juksan has been one of the leading companies in Republic of Korea for exporting of used Schiffli Embroidery Machines and Multi head Embroidery Machines to various countries of the world. "Juksan" is the name of a small village located in south-west of Cholla Province in Republic of Korea. It is also the home town of Cho Eun Young, and is the inspiration behind the formation of the Company.

In 2003, Juksan moved to Bangladesh for expanding its business and commerce and since became a pioneer in the business of manufacturing Novelty Lace, Schiffli Embroidery, Curtain, Chemical Lace, Chikan Embroidery, Home Textile Embroidery and Embroidery for Lingerie.

Our main office being in Korea and Bangladesh office which is based in Dhaka Export Processing Zone, we by the grace of Almighty Allah, have been successful in providing our clients in Bangladesh with remarkable service.

Client satisfaction and success in every sector with trust and full co-operation is the main goal of Juksan as a Company.

Contents

1

About us

2

Profile

3

Preparation

4

Product

5

Customers

About JUKSAN

Since starting embroidery operations in 2008, we have made steady progress improving and innovating on our design and production techniques. The plant now boasts seven modern schiffli embroidery machines and two mini svhiffli machines to give our valued clients the best possible professional services.

Design and embroidery work entrusted to us is performed completely in-house. Our experienced team of dedicated operators and designers will ensure fast turn around time with the lowest possible rate of defects.



Profile

No of Staff Workers:

200

Year Established:

2003

Year Of Production:

2008

Production Capacity:

Stitching Capacity Per Machine 7,80,000 ~ 1,560,000

Export Market:

Europe

USA

Korea

Japan

Middle East

Australia

Profile

Commodities:

- 1** Chemical Lace (Cotton)
- 2** Cotton Fabric Lace
- 3** Cotton Border Lace
- 4** Chemical Lace (Polyester)
- 5** Allover (Chickan Fabric)
- 6** Mesh Allover
- 7** Mesh Lace (Lingerie's)
- 8** Knit Border Lace
- 9** Denim Border Lace
- 10** Neck Lace (Cotton, Polyester)
- 11** Home Textile.

Usage :

- Home Textile
- Lingerie's
- Fashion Wear
- Garments
- Etc.

Profile

Business Type:

Manufacturer

Export Percentage:

100 Percent

Capital:

US\$ 5 Million

Competitive Advantage:

Experienced R&D Department

OEM Capability

Large Product Line

Reliability

Latest in-house machinery

Comparative in Price

Prompt Delivery

Partial Delivery

Additional Quantity

QC Responsibility:

In-house by foreign experts

Profile

Type of Plant & Machinery in Factory Production Machine Nine set

1. Lasser MDT3 ATC	2 sets
2. Lasser MDT MTC	1 set
3. Lasser Model L-93	2 sets
4. WEMS WE-15HS	1 set
5. Hiroka VE-II Computerized	1 set
6. Mini Schiffli Machine	2 sets

Sampling Machine

3.5 Yards	1 set
2 x 2 Yards (Mirror Type)	1 set

Auxillary Machine

Hemmerle Brand Shearing Machine.	1 set
Scalloping Machine.	2 sets
Bobbin Winding Machine.	5 sets
Ironing Machine.	2sets
Mending Machine.	10 sets
Inspection Machine.	6 sets
Lace Folding Machine.	2 sets
Thread Cleaning Machine	2 Sets
Washing and dryer (combo)	1 set

Preparation

- **Design Development / Punching**

Distinctive designs are created with the aid of specialized CAD / CAM software

Yarn Setup

The front yarn (which forms the embroidery) is wound on tubes and fed on the production
The back yarn (which holds the front yarn through the fabric) is wound around bobbins.

- **Fabric Setup**

The fabric for embroidery is fixed on a cloth roller as per the desired length.

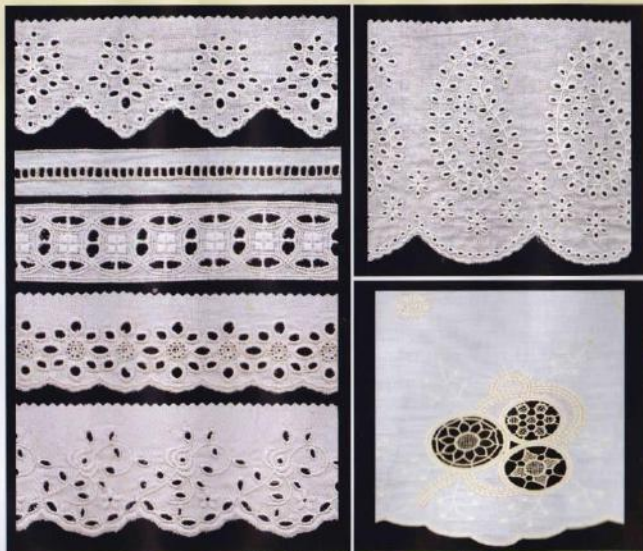
- **Embroidery**

Embroidery is done on the Schiffli or Mini Schiffli embroidery machines based on the design and the end application of the fabric. The entire process is automatic and computer controlled.

- **Finishing**

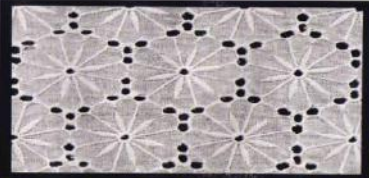
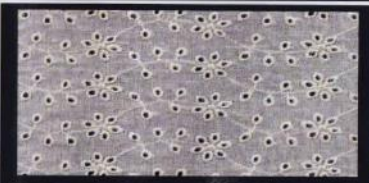
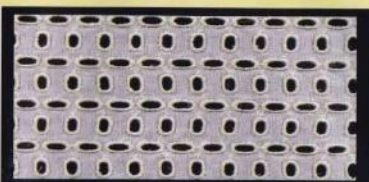
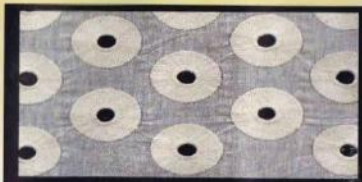
Comprises mending, Shearing, Scalloping, Processing and Packing

Cotton Fabric Lace

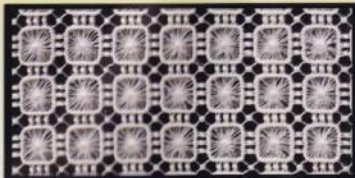


www.juksana.com

Cotton Fabric Allover



Cotton Polyester Allover



Cotton / Polyester Lace 1



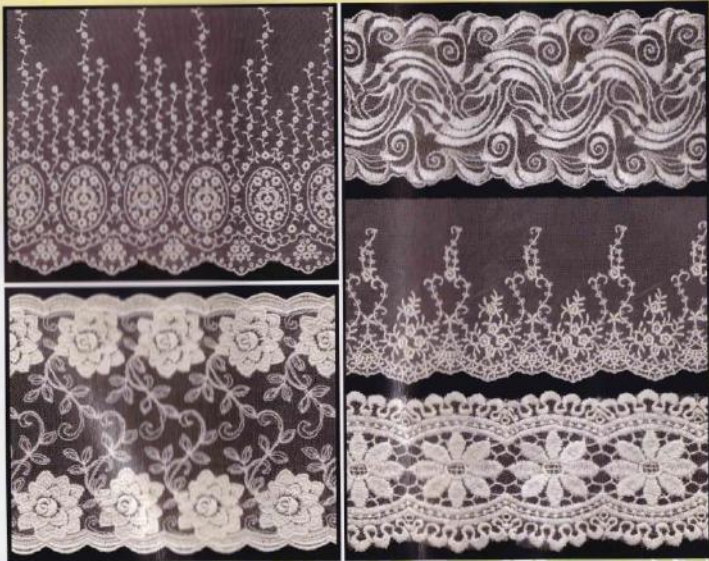
Cotton / Polyester Lace 2



Mesh Allover



Mesh Lace



www.juksana.com

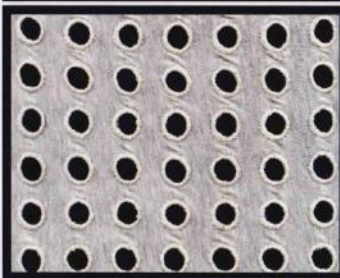
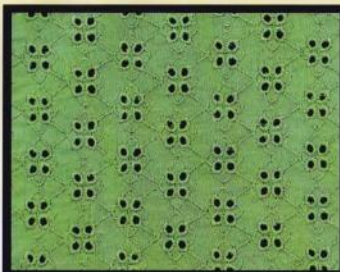
Denim Border Allover Embroidery 1



Neck Lace Patches 1



Knit Border Allover Embroidery



Denim Border Allover Embroidery 2



Neck Lace Patches 2



HOME TEXTILE



www.juksana.com

Our Customers

next

NEW LOOK



M&S
EST. 1884

H&M

LINDEX

Target



TESCO

Bershka

ZARA

Walmart

PRIMARK®



JUKSAN (BD) LTD.

Lace & Schiffli Embroidery Products.